



# Hawthorn Community Primary School Prospectus

2022-23

For further information please look on our school website:

[www.hawthornprimarykettering.co.uk](http://www.hawthornprimarykettering.co.uk)



We look forward to welcoming you to our school.



Hawthorn Road

Kettering

Northants

NN15 7HT

Telephone: 01536 512204

Fax: 01536 512468



### Our Vision and Values

Our school vision is

**'Cultivating the futures of our children'**

This vision is underpinned by 6 school values (see below).

At Hawthorn, we inspire children to express their **creativity** in all areas of learning and in their wider school experiences. We develop children's **resilience** in challenges that they may face. **Respect** underpins every aspect of our school life and beyond. We promote **thoughtfulness** in all that we do. Encouraging **teamwork** enables our children to become well-rounded citizens in preparation for their future lives. We empower our children to have a greater understanding of their role in class, school and wider **community**.



### Enrichment activities

As part of our curriculum we offer a range of extra-curricular clubs. A range of seasonal sports clubs are offered and delivered by outside providers. These clubs not only provide opportunities to develop sporting skills but also emphasise the importance of team work, enthusiasm and perseverance.

Other extra curricular activities may include:  
Sports, Reading Clubs,  
Coding, Mindfulness,  
Board Games, Arts and  
Crafts, Film Club and  
Lego.



### Music

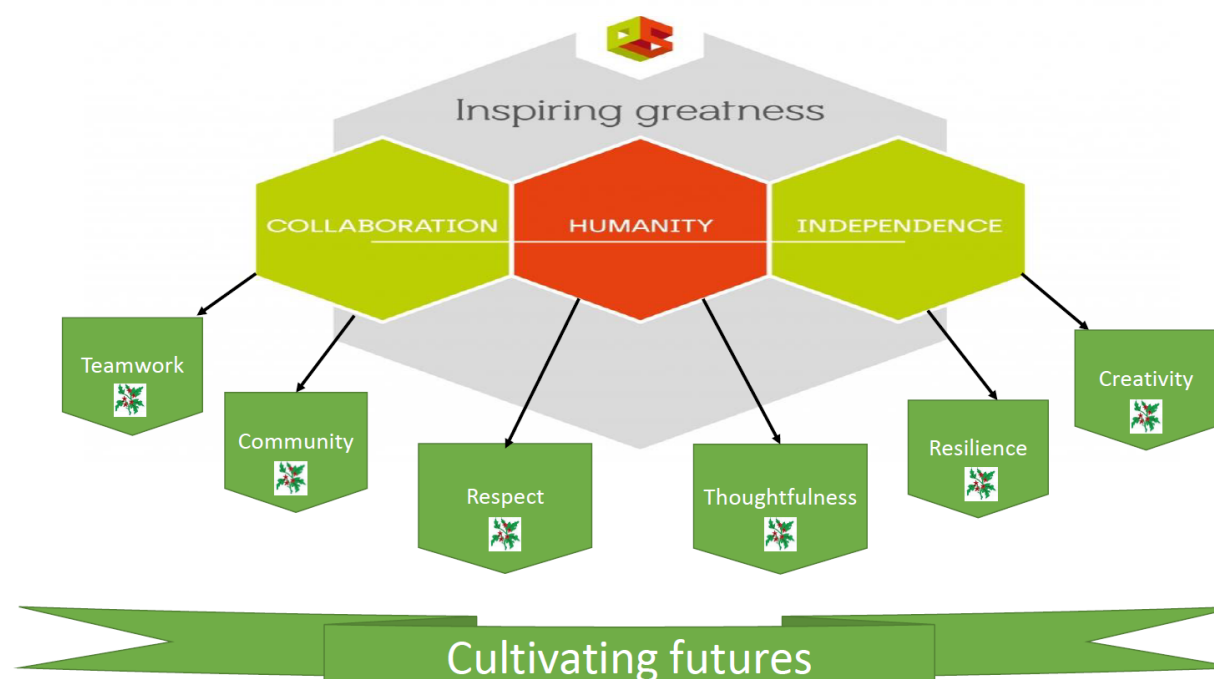
We are proud of our music and during the children's school career they will experience learning to play a musical instrument linked to the NMPAT First Access project. We have a Hawthorn school choir which has sung in a range of competitions and musical events.

### Trips and visits

Throughout the year we endeavour to provide a range of outside trips and visits for the children to enhance their learning further. We also arrange residential trips for Year 6 and Year 4.



### Our Values





### Meals and Snacks

Hot meals are provided by an outside caterer. Each day children can choose from a selection of options that are pre-booked directly with the caterers. All EYFS and KS1 children are entitled to a free school meal under the Universal Infant Free School Meal scheme. Children in receipt of Pupil Premium funding are also entitled to a free school meal.

Children under the age of 5 are entitled to free milk and children over the age of 5 are able to purchase milk through Cool Milk, our suppliers. A snack of a piece of fruit is provided for all EYFS and KS1 children and children in KS2 are encouraged to bring a healthy snack into school each day as well as a water bottle. Fresh drinking water is available

### Attendance

Attendance matters. Regular attendance in school is important for a child's education and well-being.

Parents have a legal duty to ensure their child is in school every day and on time. We regularly monitor attendance and award certificates to children who have been able to attend school regularly throughout the year.



### Uniform

We expect our children to come to school in full uniform. Our uniform is a bottle green jumper or cardigan, grey trousers, shorts or skirt. A white polo shirt or shirt or a green and white check dress in the summer.

PE kits are a simple white t-shirt and black shorts for indoors and a pair of jogging bottoms, black hoodie (plain, or with school logo) and trainers for outdoors.

All uniform is available with the school logo from Karl Sports in Kettering or online from Myclothing.

### Welcome To Our School



Hawthorn Community Primary School sits in the very heart of our community. Although we have more than 127 years of heritage, our school has its eyes firmly fixed on the future as we aim to give our children the best educational experience possible.

Starting school is a key moment in every child's life. Whether your child is coming to school for the first time or joining Hawthorn from elsewhere, we want to ensure that their school experience not only enables them to fulfil their academic potential but also nurtures their creativity and confidence and supports them in becoming respectful citizens of our future.

At Hawthorn we are committed to creating an inclusive and caring environment where every child feels safe, happy and valued. It is important that children and parents alike feel a sense of pride and belonging towards our school. Our dedicated team of staff work tirelessly to support our children's wellbeing, achieve high standards and provide opportunities that will shape their futures.

We offer our children an engaging, broad and balanced curriculum, which aims to spark their curiosity and cultivate a passion for life-long learning. Our curriculum brings knowledge, skills and understanding alive for our children ensuring that whilst they are learning, they are also having fun and creating a lifetime of memories! We look forward to welcoming you and your child to Hawthorn Community Primary School. This is the start of an important partnership and a magical journey. We thank you for choosing our school and we will strive to ensure your child is safe, happy and always learning.

### A traditional school

Hawthorn Community Primary School was built in 1894 and generations of families have passed through our doors. We aim to keep some of the traditions alive that have been part of the school for many years. Each year we celebrate Mayday with some traditional Maypole dancing and country dancing.



At Christmas time the EYFS and KS1 children hold a Christingle service at St Michael's church in Garfield Street and KS2 hold a musical evening at The United Reform Church on London Road.



## EYFS

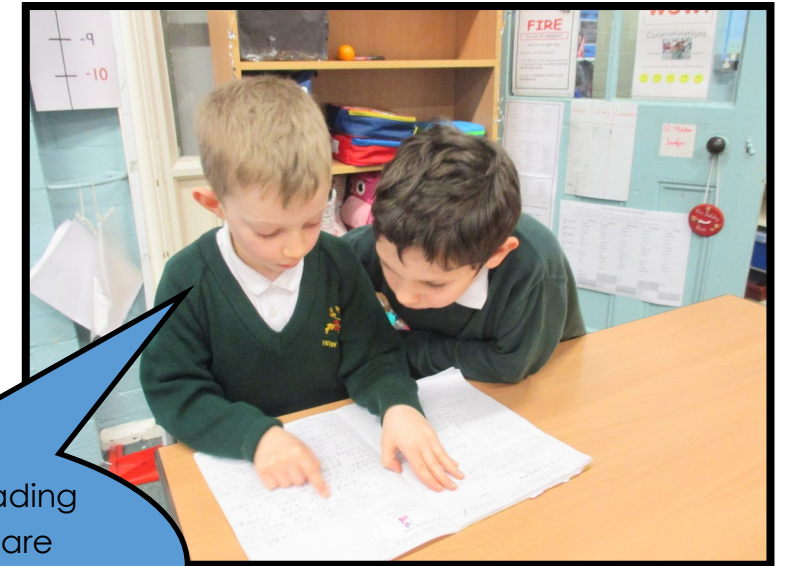
Our Early Years provision is the start of many children's journey at Hawthorn School. The setting helps us to establish firm foundations in the children's learning through a whole host of exiting and engaging new experiences. We stimulate children's natural curiosity, nurture their capacity to learn and enable them to form respectful relationships and express themselves as individuals. Activities are based on children's interests and build on their prior skills and knowledge. Children have the chance to learn in our outdoor space called The Barn as well as across two class bases.



In our Early Years provision we carefully track children's progress using the Early Years Foundation Stage Curriculum. All children have a Class Dojo account where we will share photographs of their experiences throughout the year.

## A family feeling

We like to work together and will spend time with older and younger children in the school. The older children will become reading buddies and maths buddies to the younger children throughout the year, and play leaders support children's play on the playground.



I like reading with the reading buddies because they are very kind and it is fun!

I find school happy since we had our new school rules.  
I am excited about coming to school as I can see my friends.





### Home school links

At Hawthorn we aim to have positive home school links. Our families are important to us and we would like to work together in the best interest of your children.

We actively encourage all prospective parents to come and visit to look round our fantastic school and see us in action.

We provide 3 opportunities for parents to come and discuss their child's progress and attainment throughout the year. Two of these are formal parent consultation evenings and the final one is for any parent that would like to discuss the end of year annual report, which all families receive in July.

Six times a year we provide a forecast sheet that provides information about the topics covered during the term and weekly information sheets will give further information to add to these.

Each week there is a newsletter that is sent home as well as published on our website which shows all the amazing things we do in school.

If you ever have any concerns or queries about your child we encourage parents to come and talk to the class teacher or members of the leadership team.

At Hawthorn Community Primary School we encourage active learning where children can work together to aid consolidation and collaboration.

We focus on a broad and balanced curriculum where music, PE and the arts are important to us to ensure we are able to support well rounded children ready for the next stage in their lives.



### How to get involved

**We have an active Parent and Friends Association (PFA), called the Friends of Hawthorn. The PFA provide many fundraising activities for families to enjoy during the year. The money raised by the PFA supports us in ensuring we are giving the children the best experiences possible. If you would like to be involved with the Friends of Hawthorn, please let the school know.**



### KS1 and KS2

Children enter KS1 when they get to Year 1 and KS2 when they reach Year 3. We have mixed age classes and staff teams work closely together in their phases to ensure children can share experiences and activities both inside and outside.

Children are encouraged and supported to make good progress and to achieve well within the classes.

We plan activities based on individual needs, providing timely support and intervention where needed, ensuring that our children achieve their potential.

## Hawthorn Out of School Club

Breakfast Club - After School Club - Holiday Playscheme

At Hawthorn Community Primary School we provide a wraparound service for our families. The service is run by many members of the school staff and therefore school expectations will follow through to the club. We provide a safe, secure friendly environment to make friends, play games, be creative and imaginative or just to relax with a book.

The Out Of Schools Club is run from our Community Room within the school building. Activities are provided both indoors and outdoors for both the After School Club and Holiday Playscheme.

All staff hold a current DBS certificate and during each session there will be members of staff who are trained in Paediatric first aid, food hygiene, Level 3 playwork or child care.



## Safeguarding and Pastoral Care

We aim to provide a welcoming, safe and stimulating environment for all of our families. We employ a Family Support Worker, Emma Brown, who can work with individual children, parents or whole families to help nurture the emotional needs of the children in our care. She provides several nurture groups throughout the week including Wellbeing and Self-Esteem.

At Hawthorn we believe safeguarding is everyone's responsibility. We have a duty to keep children safe and to be alert at all times to their welfare and well-being. We encourage our staff to be vigilant at all times. Any concerns about a child, however small, should be reported to our Designated Safeguarding Leads Emma Jacox, Frances Martin or Emma Brown.

***Safeguarding is everyone's responsibility.***



Mrs Emma Brown  
Family Support Worker



Mrs Frances Martin  
Inclusion Leader

## Positive Behaviour Policy

At Hawthorn Community Primary School, we aim to create a consistent, calm, caring and safe environment in which our children can work towards achieving their full potential.

We follow a positive behaviour policy and hold our children in an unconditional positive regard. We have high expectation for the behaviour of everyone at our school.

We have three school rules, chosen by our children, which we expect everyone to follow:

**Be Kind. Work Hard. Stay Safe.**

We use these rules throughout the day and our children are rewarded for following them.

## Special Educational Needs

As a school we operate a Special Educational Needs and Disability Policy that aims to provide early identification and support for children with special educational needs. If a child has special educational needs, parents are notified at the earliest opportunity so that discussions may begin to establish the best way forward. All children who are identified as having special educational need will be given support and intervention to help them in their learning and additional support from outside agencies will be sought if necessary. If you are concerned that your child has a special educational need, Mrs Martin our SENDCo, will be happy to help.