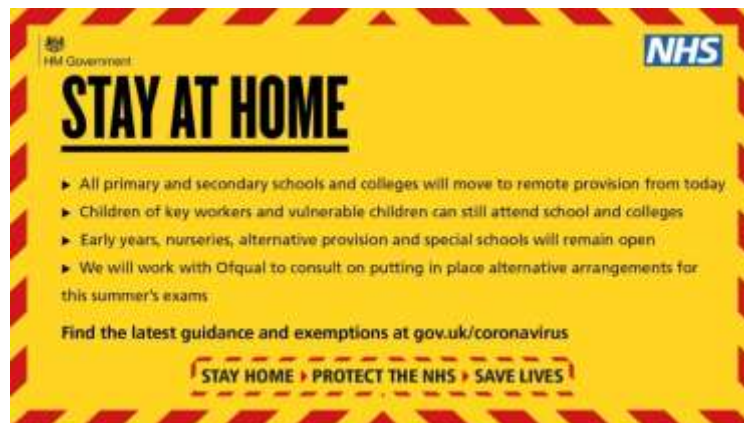


Advice for Critical Workers January 2021



<https://www.gov.uk/government/publications/coronavirus-covid-19-maintaining-educational-provision/guidance-for-schools-colleges-and-local-authorities-on-maintaining-educational-provision>

The Government guidance above, updated on 8th January 2021, clearly states: *'Children with at least one parent or carer who is a critical worker can go to school or college if required, **but parents and carers should keep their children at home if they can.***'

In order to stem the spread of the virus and keep our pupils, staff, families and communities safe, it is vital that we reduce the number of critical workers in school so please only send your child in if you need to.

We have put together some examples to help you make decisions:

Please do not send your child/ren into school:

- If your partner is at home
- When you are not working due to shift patterns – we are happy to accommodate part time attendance to support you
- You have a support bubble that your child could go to and learn
- If your employer can enable you to work from home (ask if this is possible)