



PARENT PRESENTATION

Longtown Outdoor Learning



Every Longtown course provides the opportunity
for

Challenge

Discovery

Reflection

● Why Longtown?



Confidence



Being challenged



Communication



Learning how to manage risks



Responsibility & independence



Learning new skills



Real World Learning



Teamwork

● Location and History



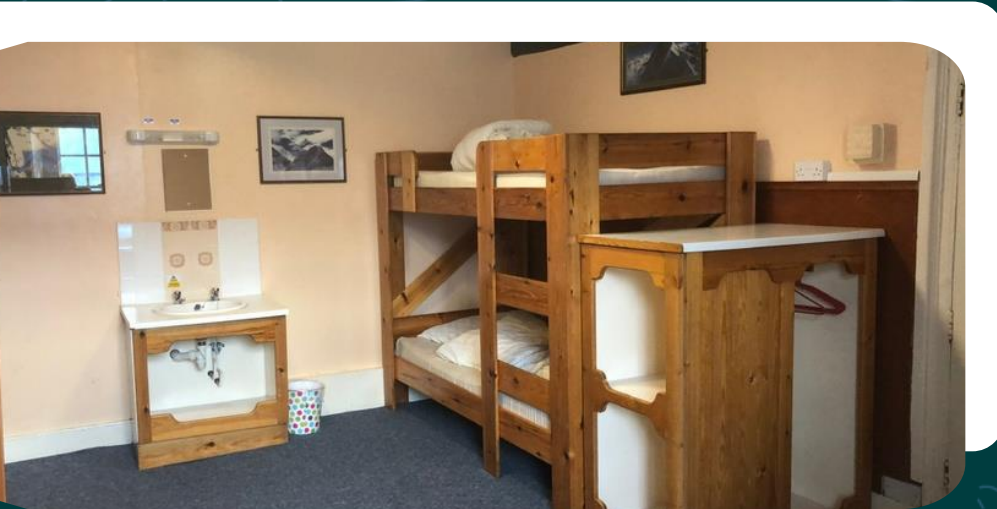
Longtown Outdoors was Established in 1964 and Everest Expedition Leader Lord Hunt was 1st patron.

It is in a spectacular location on the edge of the Brecon Beacons National Park, nestling at the foot of the Black Mountains between Hereford and Abergavenny.



Thousands of people have Experienced 'The Ultimate Adventure' at Longtown since it opened.

● Dormitory Accommodation



We have comfortable rooms with sinks and storage.

Students will be eating delicious home cooked food and all special diets are catered for.

Everyone lends a hand at meal times.



Students should bring their own duvet cover, single sheet and pillow case and they will be expected to make their beds.

● Health and safety



- First Aid - qualified staff are available for all activities
- Fire Safety - a fire drill is performed for every group
- Risk Assessments and site specific training have been completed for every activity
- The centre is licensed by the Adventure Activities Licensing Authority.
- All staff have completed enhanced DBS checks

● Onsite activities




- Climbing Wall
- Orienteering
- High Ropes
- Team Challenges
- Paddle Boarding
- Zip Wire
- Archery
- Low Ropes
- Raft Building
- Forest School

● Offsite activities

- Gorge Walking
- Rock Climbing
- Mountain Walking
- Paddle Boarding
- Canoeing
- Kayaking
- Caving



● Your Programme

 Hawthorn 27+staff				
	Team 1	Team 2	Team 3	Evening
	CD: Jeff			
	Arr:			
Mon 30	Stream Scramble Joe	Stream Scramble Jeff	Stream Scramble Wyl	Shelter Building Jeff
Tue 1	Caving 2 busses Dave	Caving 2 busses Jeff	Caving 2 busses Wyl	Orienteer Tom
Wed 2	SUP/Low Ropes Joe/Tom	SUP/Low Ropes Joe/Tom	SUP/Low Ropes Joe/Tom	dep 1

● Personal Kit

What you need:

- Lots of clothes that can get wet and muddy!

What we provide:

- Waterproofs
- Welly Boots
- All specialist equipment

What you don't need:

- Electronic items that can be easily lost or damaged.

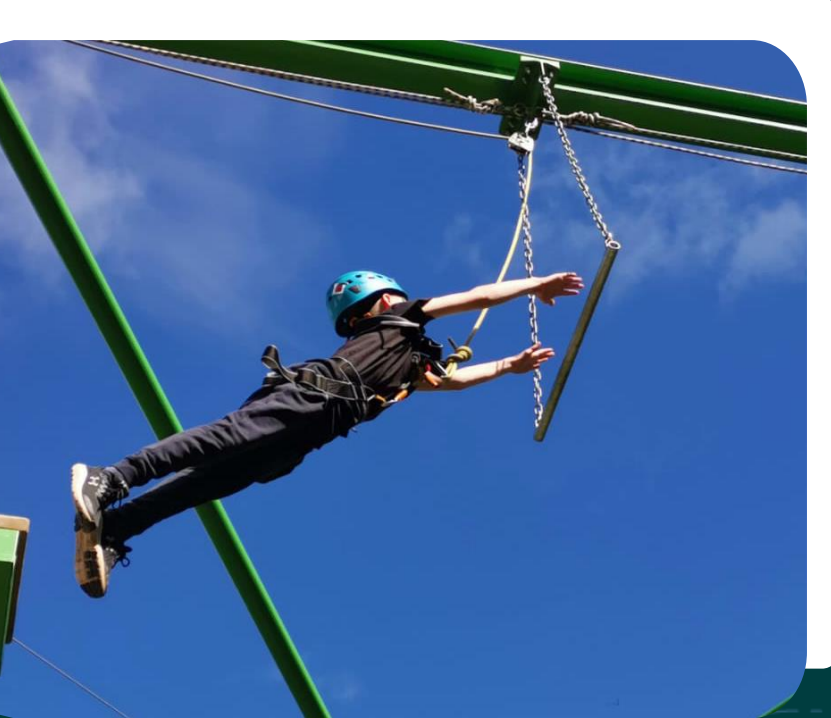


● Daily Routine

- Breakfast
- Meet Instructor
- Kit issue
- Activities
- Return kit
- Dinner
- Evening Activity
- Hot chocolate
- Bed Time



● Our Website



- Packed with useful information
- Look at the activities
- Look at the routine for a typical day
- See pictures of our accommodation
- Meet the staff

www.longtownoutdoorlearning.co.uk